



IN THE HOOP BOOTIES

.....SUPPLIES.....

STABILIZER
SCISSORS
EMBROIDERY MACHINE
SCOTCH TAPE
WATER SOLUBLE STABILIZER
FABRIC
ELASTIC 1/8" TO 1/4"
1/2" TO 1" RIBBON
SLIP PROOF GRIPPER FABRIC
SEAM RIPPER
SAFETY PIN

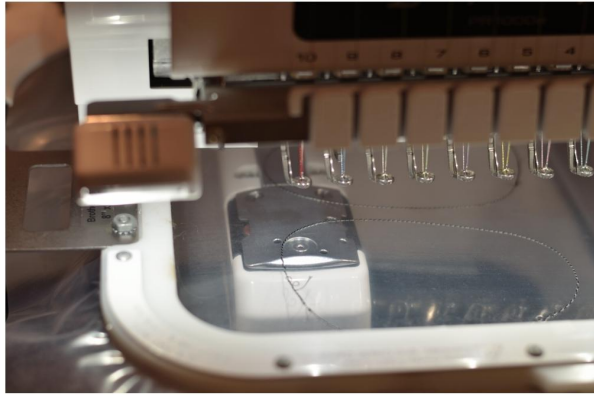
5X7 HOOP
MAKES A 3" AND 4" SHOE

6X10 HOOP
MAKES A 5" AND 6" SHOE

8X10 HOOP
MAKES A 7" SHOE

8X12 HOOP
MAKES A 8" SHOE





ALL IN THE HOOP SHOES BEGIN WITH PART 1. IT HELPS TO SEW BOTH THE SOLES AT ONCE IF YOU CAN FIT IT IN YOUR HOOP. STITCH THE DIE LINE ON A NEW PIECE OF STABILIZER.



ON THE REVERSE SIDE OF THE HOOP COVER THE DIE LINES WITH SOFT FABRIC RIGHT SIDE UP



ON THE TOP SIDE OF THE HOOP LAY ANOTHER PIECE OF FABRIC RIGHT SIDE UP. I CHOSE TO USE SKID PROOF GRIPPER FABRIC AND IT TURNS OUT FANTASTIC! YOU CAN GET IT ON AMAZON.



STITCH THE TACK DOWN LINES AND ALSO THE SMALL MARKING NOTCHES ON THE HEEL AND TOE



CUT OUT THE SOLE(S) ABOUT 1/8" FROM THE FINAL TACK DOWN STITCH. SET YOUR SOLES ASIDE. IF YOU CANNOT FIT TWO SOLES IN ONE HOOPING, SEW PART 1B SO YOU HAVE A LEFT AND A RIGHT SOLE



LOAD PART 2 AND STITCH THE DIE LINE FOR THE HEEL ON A NEW PIECE OF STABILIZER. IF YOU CAN FIT TWO IN ONE HOOPING IT WILL HELP, BUT IF YOU CANNOT THERE IS A PART 2A AND PART 2B. SPRAY TEMP GLUE ON THE WRONG SIDE OF A PIECE OF FABRIC AND FOLD IN HALF.

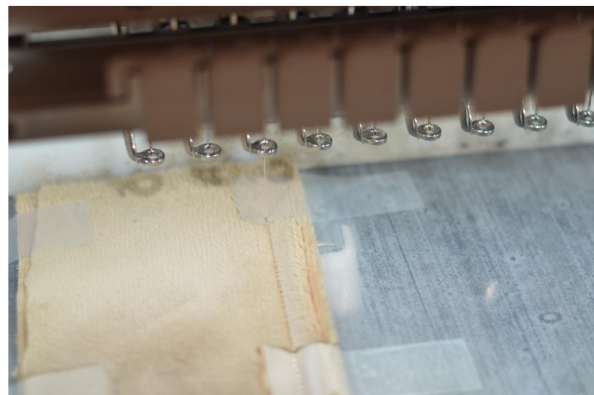
Copyright Planet Applique Inc. All Rights Reserved.



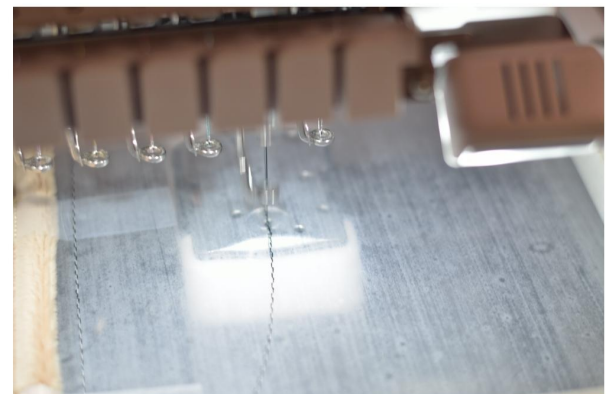
THE FOLDED FABRIC SHOULD COVER THE HEEL DIE LINE. PLACE THE FOLD ON THE STRAIGHT SIDE OF THE DIE LINE. IT CAN OVERLAP THAT LINE JUST A BIT.



TAPE THE FOLDED FABRIC DOWN WELL



STITCH THE ELASTIC CHANNEL ON THE HEEL. WE WILL BE FEEDING ELASTIC THROUGH THIS THIN CHANNEL LATER.



IF YOU ARE ABLE TO SEW TWO IN ONE HOOPING, STITCH THE DIE LINE FOR THE SECOND HEEL.



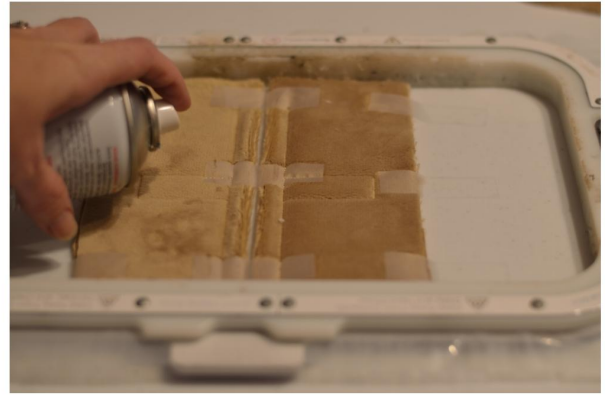
HERE THE FOLDED FABRIC IS TAPED OVER THE SECOND DIE LINE AS WE DID WITH THE FIRST



STITCH THE ELASTIC CHANNEL ON THE SECOND HEEL



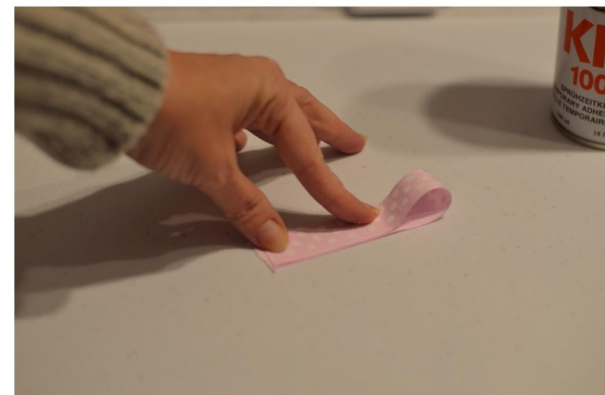
STITCH THE DIE LINE FOR THE RIBBON. IF YOU DO NOT WANT RIBBON ON YOUR BOOTIES, YOU CAN SKIP THIS STEP.



SPRAY A BIT OF TEMPORARY FABRIC GLUE INSIDE THE RIBBON DIE LINE. SKIP THIS STEP IF YOU DO NOT WANT RIBBON ON YOUR HEELS.



CUT A PIECE OF RIBBON 2 AND A HALF THE HEIGHT OF THE RIBBON DIE LINE AND SPRAY A BIT OF GLUE ON THE WRONG SIDE OF THE RIBBON



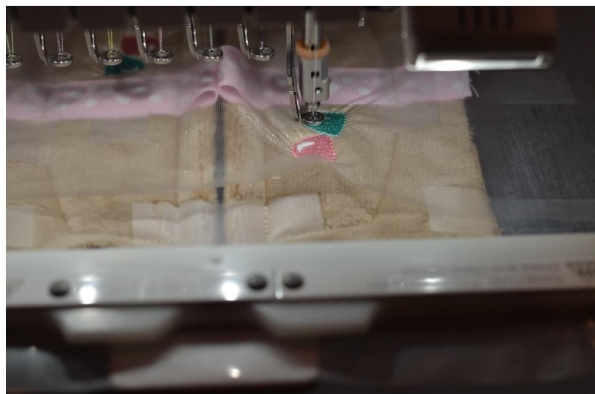
FOLD THE RIBBON OVER ON ITSELF AND PRESS TO SET THE GLUE



LAY THE FOLDED RIBBON WITH THE FOLD AS SHOWN AND TAPE IN PLACE WELL. USE RIBBON WIDER THAN THE DIE LINE!!!!



STITCH THE TACK DOWN LINE FOR THE RIBBON. REMEMBER THAT YOU CAN SKIP THIS STEP IF YOU DO NOT WANT RIBBON ON YOUR HEELS



IF STITCHING THE GINGERBREAD SHOES, STITCH THE GUMDROPS ON THE HEEL



IF SEWING THE UNICORN SHOES, STITCH THE HEARTS ON THE HEELS



WITH SEWING DONE, TRIM AROUND THE HEEL ABOUT 1/8" ON THE THREE SIDES. DO NOT TRIM THE FOLDED EDGE. REMOVE THE STABILIZER FROM THE REVERSE SIDE OF THE HEELS



FEED 1/8" OR 1/4" ELASTIC THROUGH THE CHANNEL USING A SAFETY PIN FASTENED TO ONE END OF THE ELASTIC. THIS WILL HELP YOU FEED THE ELASTIC. FOR A 4" SHOE, THE ELASTIC IS 12 INCHES LONG. SO ABOUT 3 INCHES SHOULD HANG OUTSIDE EACH END



IF SEWING THE UNICORN BOOTIES, PART 3 WILL BE THE EARS AND HORNS FOR THE SHOES. STITCH THE DIE LINE FOR THE EARS ON A NEW PIECE OF STABILIZER



COVER THE DIE LINES WITH FELT OR NON FRAYING FABRIC AND THEN STITCH THE PINK INSIDE THE EARS



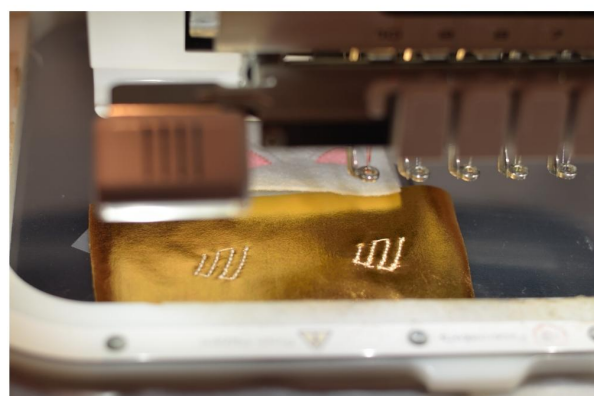
ON THE REVERSE SIDE OF THE HOOP COVER THE EARS DIELINE WITH ANOTHER PIECE OF FABRIC. TAPE IN PLACE VERY WELL



STITCH THE TACK DOWN FOR THE EARS.



STITCH THE DIE LINE FOR THE HORN AND COVER WITH FABRIC RIGHT SIDE UP. I AM USING GOLD LAME FABRIC.



STITCH THE LINS ON THE HORN



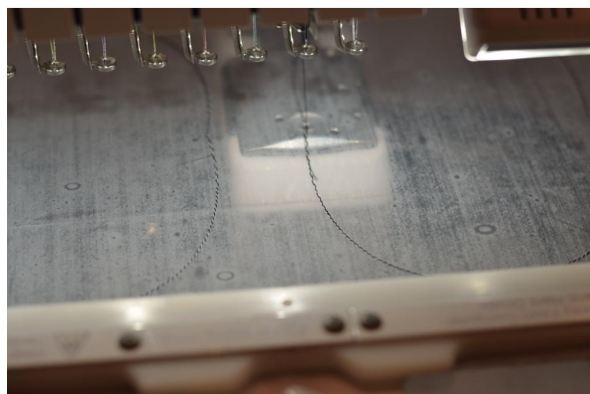
ON THE REVERSE SIDE OF THE HOOP PLACE ANOTHER PIECE OF HORN FABRIC COVERING THE DIE LINES FOR THE HORN RIGHT SIDE UP. TAPE IN PLACE WELL



STITCH THE FINAL TACK DOWN FOR THE HORN



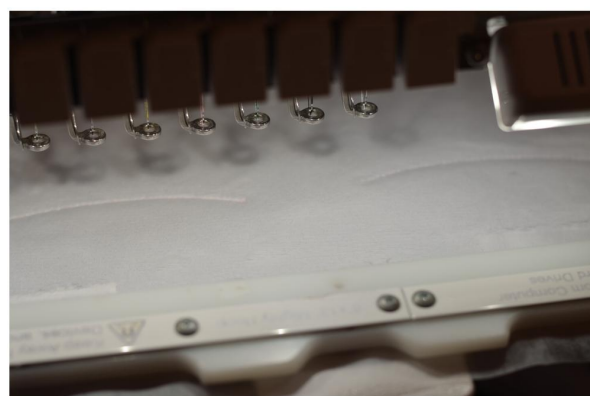
TRIM THE EARS AND HORNS OUT CLOSE TO THE TACK DOWN LINES. DO NOT DO NOT DO NOT TRIM THE BOTTOM OF THE HORNS AND EARS. LEAVE THEM LONG.



IF STITCHING THE UNICORN SHOES, LOAD PART 4 AND STITCH THE DIE LINE FOR THE TOE ON A NEW PIECE OF STABILIZER



COVER THE DIE LINE WITH A PIECE OF FABRIC RIGHT SIDE UP



STITCH THE DIE LINES FOR THE MUZZLES



COVER THE DIE LINE WITH ANOTHER PIECE OF FABRIC RIGHT SIDE UP



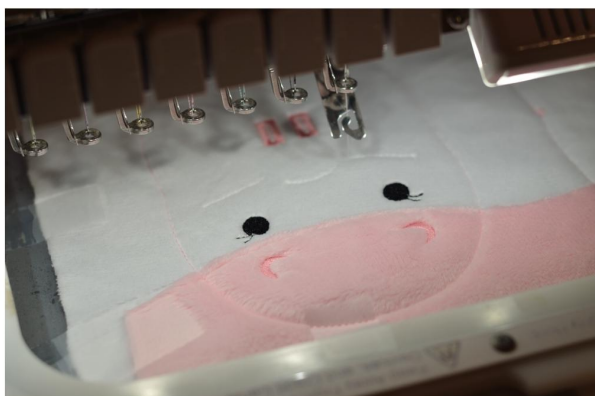
STITCH THE TACK DOWN LINE FOR THE MUZZLE



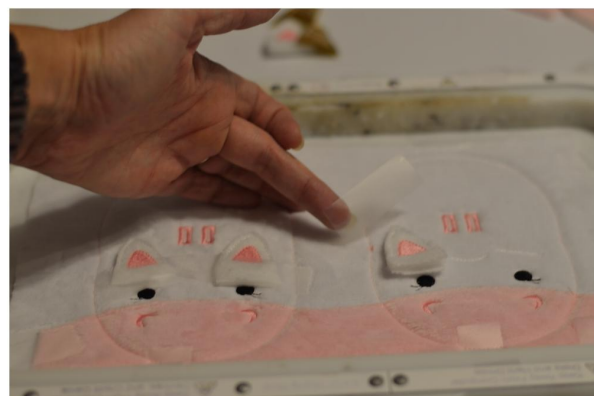
TRIM AWAY THE FABRIC AS SHOWN FOR THE MUZZLE NEXT TO THE TACK DOWN LINE



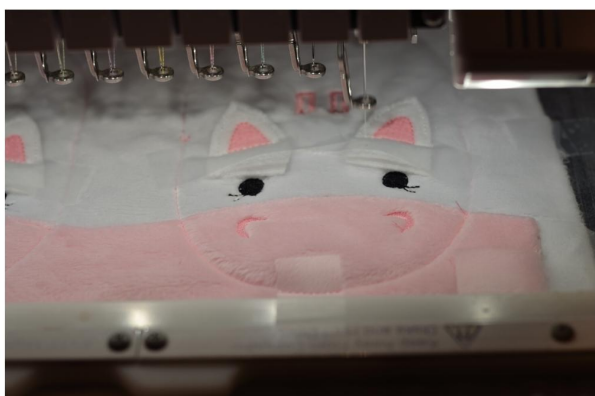
IF USING PILE FABRIC, LAY A PIECE OF WATER SOLUABLE STABILIZER OVER THE FACE AND STITCH THE NOSE AND EYES, AND BUTTON HOLES.



REMOVE THE STABILIZER FROM FACE AND STITCH THE TACKDOWN FOR THE WHOLE TOE AS WELL AS DIE LINES FOR THE EAR AND HORN PLACEMENT



TAPE THE EARS OVER THESE DIE LINE SO THAT THE BOTTOM OF THE FILLED PINK PART OF THE INNER EAR WILL FALL ON THE DIE LINE.



STITCH THE TACK DOWN FOR THE EARS



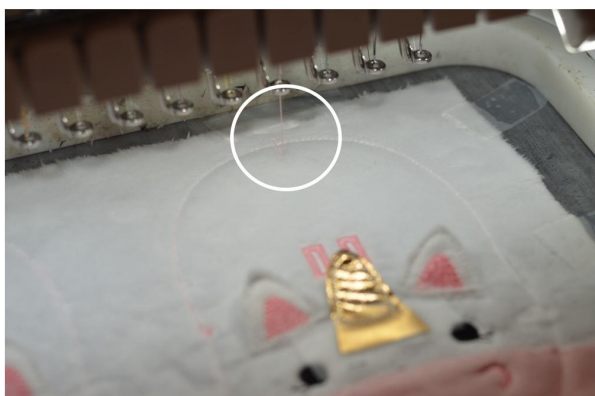
TRIM AS CLOSE AS YOU CAN TO THE TACK DOWN FOR THE EARS TO REMOVE THE EXCESS FABRIC. IT SHOULD LOOK LIKE THIS



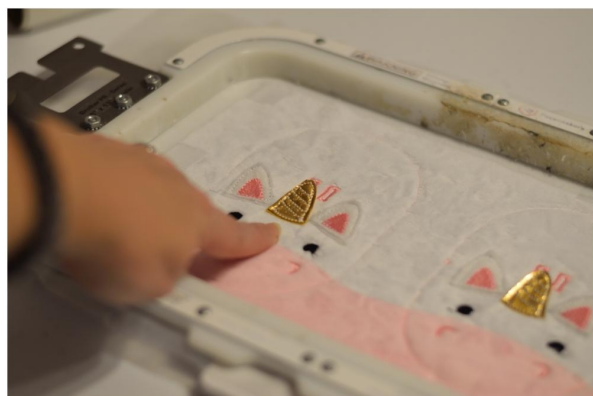
TAPE THE HORN OVER THE HORN DIE LINE SO THAT THE BOTTOM OF THE HORN WHERE STITCHING STOPPED WILL FALL RIGHT ON THE DIE LINE. IMAGINE THAT THE DIE LINE WILL COMPLETE THE HORN SHAPE



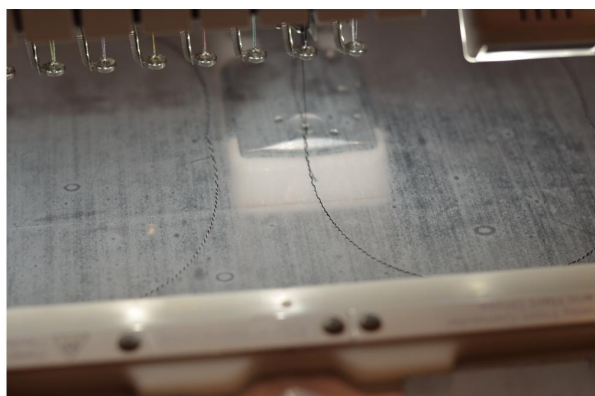
STITCH THE TACK DOWN FOR THE HORN



ALSO STICH THE MARKER ON THE TOE



TRIM THE EXCESS FABRIC FROM THE BOTTOM OF THE HORN AS SHOWN



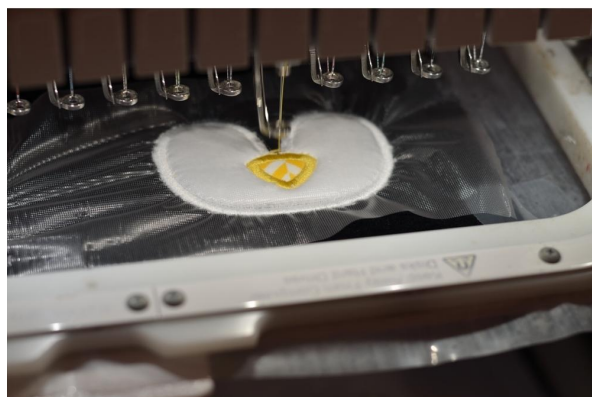
IF STITCHING THE PENGUIN BOOTIES, LOAD PART 3 ON A NEW PIECE OF STABILIZER AND STITCH THE DIE LINE FOR THE TOE



STITCH THE DIE LINE FOR THE FACE



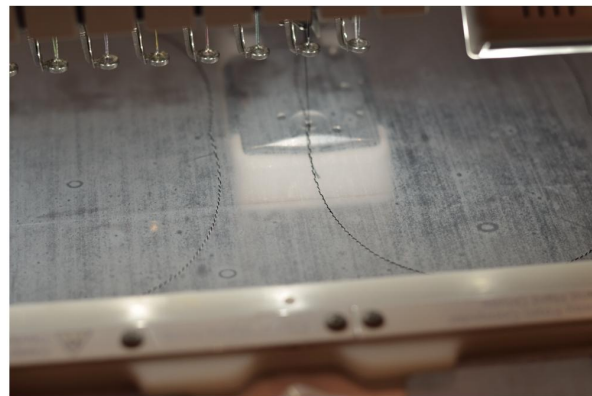
COVER THE FACE DIE LINE WITH FABRIC RIGHT SIDE UP AND STITCH THE TACK DOWN. TRIM AROUND FACE CLOSE TO THE TACK DOWN. YOU CAN STITCH THE SATIN STITCH IF DESIRED OR SKIP. ALSO STITCH DIE LINE FOR BEAK, PLACE FABRIC, STITCH TACK DOWN



I STITCHED THE SATIN STITCH ON THESE. I LIKED THE LOOK. NOTICE I USED WATER SOLUABLE STABILIZER BECAUSE MY FABRIC HAS A PILE TO IT.



STITCH THE EYES AND BUTTON HOLES, THE FINAL TACK DOWN AND THE PLACEMENT MARKER. TRIM AROUND THE TACK DOWN WHEN FINISHED ABOUT 1/8" AND SET ASIDE. STITCH ANOTHER TO MAKE A PAIR.



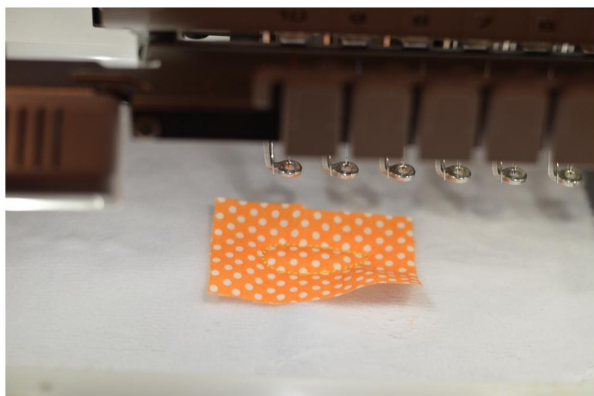
IF STITCHING THE SNOWMAN BOOTIES, LOAD PART 3 ON A NEW PIECE OF STABILIZER AND STITCH THE DIE LINE FOR THE TOE



COVER WITH FABRIC RIGHT SIDE UP



STITCH THE DIE LINE FOR THE NOSE



COVER THE NOSE WITH FABRIC AND STITCH THE TACK DOWN FOR THE NOSE.



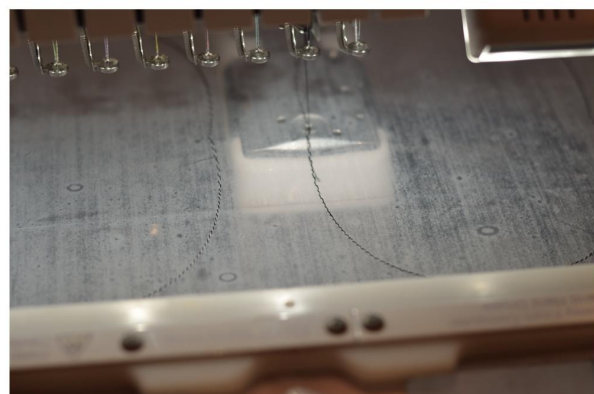
TRIM AROUND THE NOSE CLOSE TO THE TACK DOWN LINE.



IF YOU DESIRE, STITCH THE SATIN STITCH AND TRIPLE BEAN STITCH. BE SURE TO USE WATER SOLUABLE STABILIZER IF YOUR SHOE FABRIC IS FURRY OR HAS A PILE



STITCH THE EYES, MOUTH, BUTTON HOLES, TACK DOWN LINE AND THE PLACEMENT MARKER. ALL DONE! STITCH ANOTHER TO MAKE A PAIR.



IF STITCHING THE GINGERBREAD BOOTIES, LOAD PART 3 ON A NEW PIECE OF STABILIZER AND STITCH THE DIE LINE FOR THE TOE



COVER WITH FABRIC RIGHT SIDE UP





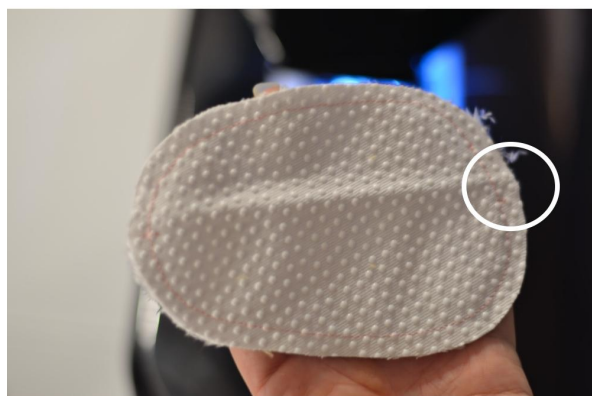
IF USING PILE FABRIC COVER THE FACE WITH WATER SOLUABLE STABILIZER AND STITCH THE FACE, THE ICING, THE BUTTON HOLES, THE TACK DOWN, AND PLACEMENT MARKER.



TRIM AROUND THE TOE 1/8" FROM THE FINAL TACK DOWN AND USE A SEAM RIPPER TO CUT A SLIT INSIDE THE BUTTON HOLES. YOU WILL OPEN THE BUTTON HOLES FOR ANY BOOTIE YOU ARE SEWING. SAME FOR ALL OF THEM



FOLD THE TOE PORTION OF THE BOOTIE IN HALF. I LIKE TO SPRAY A BIT OF GLUE TO KEEP IT FROM SHIFTING.



HOLD THE SOLE WITH THE GRIPPER FABRIC FACING YOU. LOCATE THE MARKER AT THE TOE OR FATTER SIDE



FLIP THE TOE SO YOU SEE THE BUTTON HOLES. LINE UP THE MARKER ON THE TOE WITH THE MARKER ON THE SOLE AS SHOWN.



SEW FROM THE CENTER MARKER TO THE EDGE OF THE TOE ON ONE SIDE. I DID AN 1/8" SEAM ALLOWANCE. GO SLOWLY. NO NEED TO PIN IT. JUST WALK THE MACHINE ONE STITCH AT A TIME. ITS REALLY EASY!



FLIP THE SHOE OVER SO THE SOLE IS NOW RIGHT SIDE UP AND SEW FROM THE CENTER MARKER DOWN THE OTHER SIDE OF THE TOE.



IT SHOULD LOOK LIKE THIS....KINDA LIKE A SLIPPER. LEAVE IT JUST LIKE THIS AND GRAB YOUR HEEL PART



HOLD THE HEEL WRONG SIDE SHOWING. LOCATE THE MARKER ON THE HEEL IN THE CENTER AND LINE UP WITH THE CENTER MARKER ON THE SOLE



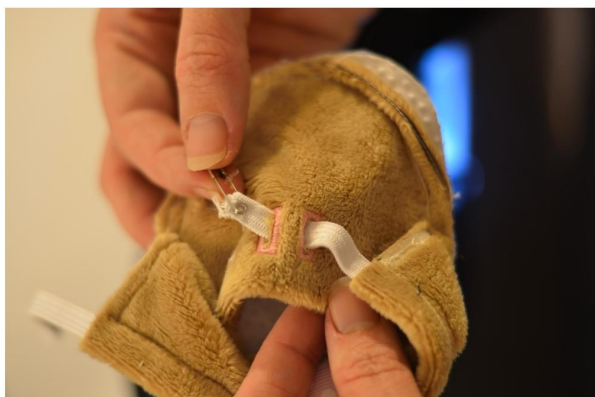
START AT THIS CENTER MARKER AND SEW DOWN ONE SIDE, SEWING THE HEEL TO THE SOLE. YOU WILL OVERLAP THE TOE. ITS OK. THIS IS WHAT WE WANT.



GO SLOWLY, WALK YOUR MACHINE STITCH BY STITCH UNTIL ONE SIDE OF THE HEEL HAS BEEN SEWN TO THE SOLE OF THE SHOE USING AN 1/8" SEAM ALLOWANCE



FLIP THE SHOE OVER SO YOU ARE LOOKING AT THE SOLE AND NOW STITCH FROM THAT SAME CENTER MARKER DOWN THE OTHER SIDE, SEWING THE HEEL TO THE SOLE WITH AN 1/8" SEAM ALLOWANCE. ITS WILL OVERLAP THE TOE PART WHERE YOU SEWED IT



WITH EVERYTHING SEWN TOGETHER, LOCATE THE BUTTON HOLES. FEED ONE END OF THE ELASTIC THROUGH THE BUTTON HOLES AS SHOWN



PULL THE ELASTIC AND ADJUST THE GATHERING. MY ELASTIC WAS 12 INCHES. I PULLED 4 INCHES ON EACH SIDE UP



TIE A DOUBLE KNOT IN THE ELASTIC



LIKE THIS... TIE THE KNOTS AND CUT THE ELASTIC TAILS THAT ARE LOOSE



PUSH THE KNOT EITHER INTO THE HEEL ELASTIC CHANNEL WE MADE OR IN BETWEEN THE BUTTON HOLE.



CAREFULLY TURN THE SHOES RIGHT SIDE OUT!! USING MINKY OR STRETCHY FABRICS MAKE THIS EASY. GET THE HEEL TURNED FIRST THEN WORK ON THE TOE UNTIL ITS ALLRIGHT SIDE OUT! AWWWWWWW!!!



HERE IS THE COMPLETED PENGUIN BOOTIES!



HERE IS THE COMPLETED SNOWMAN BOOTIES!



HERE IS THE COMPLETED GINGERBREAD BOOTIES



HERE IS THE COMPLETED UNICORN BOOTIES