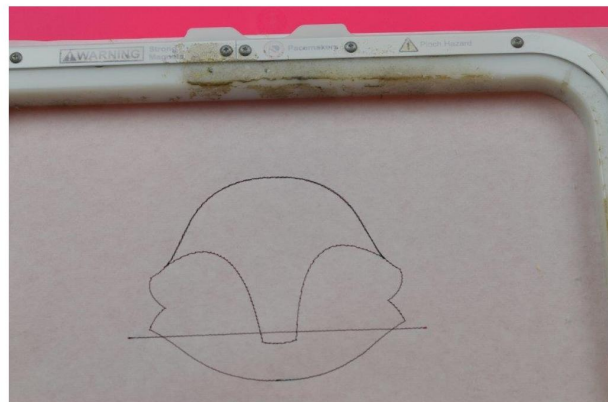
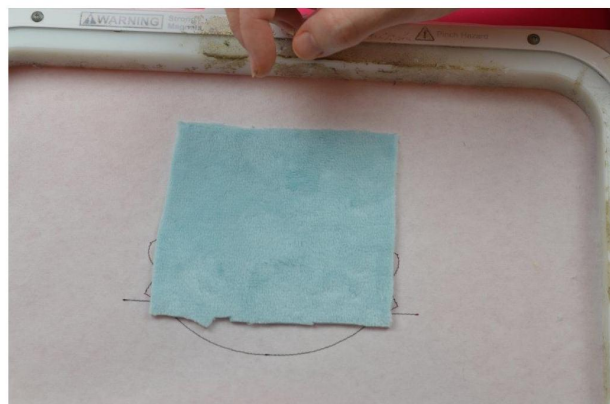


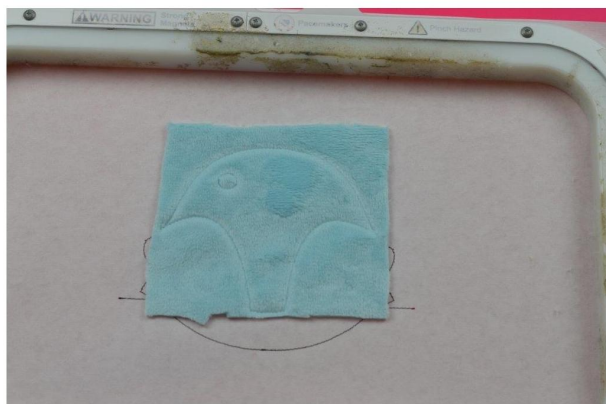
OPEN UP THE FOX BACK AS SHOWN AND SET IT ASIDE FOR LATER USE.



TO STITCH THE FOX HEAD, WE LOAD PART 4 OF THE FOX AND STITCH THE DIE LINES ON A NEW PIECE OF STABILIZER



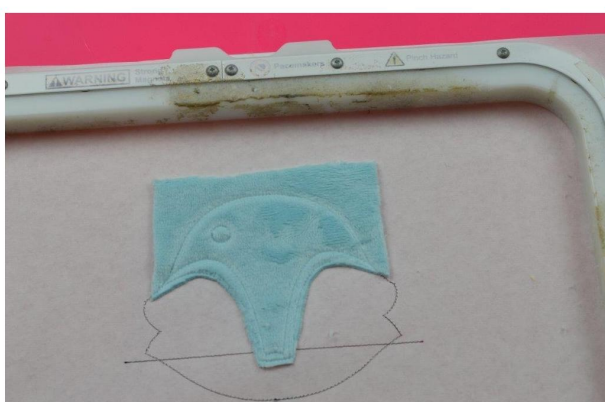
COVER THE TOP HALF OF THE HEAD WITH A PIECE OF FABRIC RIGHT SIDE UP AND TAPE IN PLACE



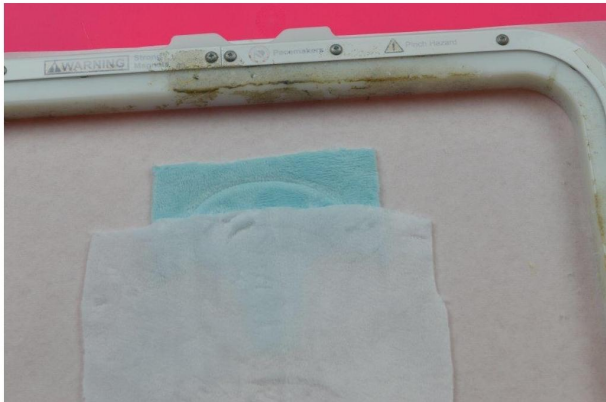
STITCH THE TACK DOWN FOR THE UPPER PART OF THE HEAD AND ALSO THE FLOWER PLACEMENT CIRCLE



TRIM ONLY THE CHEEKS AS SHOWN NEAR THE TACK DOWN



STITCH THE DIE LINE FOR THE LOWER PART OF THE FACE



COVER THE DIE LINE WITH A PIECE OF FABRIC RIGHT SIDE UP AND TAPE IN PLACE



STITCH THE TACK DOWN FOR THE LOWER HALF OF THE FACE AND TRIM THE TOP EDGES OF THE CHEEKS AS SHOWN



STITCH THE SATIN STITCH FOR FACE.



STITCH THE DIE LINE FOR THE NOSE



COVER WITH FABRIC RIGHT SIDE UP, STITCH THE TACK DOWN LIKE FOR THE NOSE. TRIM THE FABRIC AROUND THE TACK DOWN OF THE NOSE TOO



STITCH THE SATIN STITCH ON THE NOSE





STITCH THE EYELASHES FOR A GIRL, THEN THE EYES  
ALSO STITCH THE DIE LINE FOR THE EARS



USE A NEEDLE TO ALIGN THE CIRCLE ON THE FLOWER  
WITH THE CIRCLE ON THE FACE AND TAPE THE FLOWER  
DOWN FOR PERFECT PLACEMENT



STITCH THE CENTER CIRCLE DIE LINE



FOLD THE FLOWER DOWN AND OUT OF THE WAY AS  
SHOWN AND TAPE



FOLD THE EARS LIKE THIS BUT MIRRORING EACH OTHER



PLACE THE EARS FACE DOWN OVER THE EAR DIE LINES  
AND TAPE IN PLACE



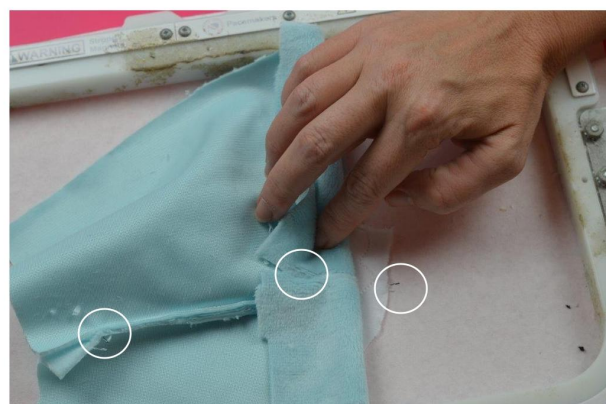
TRIM THE EXCESS FABRIC AWAY FROM THE FACE AS SHOWN



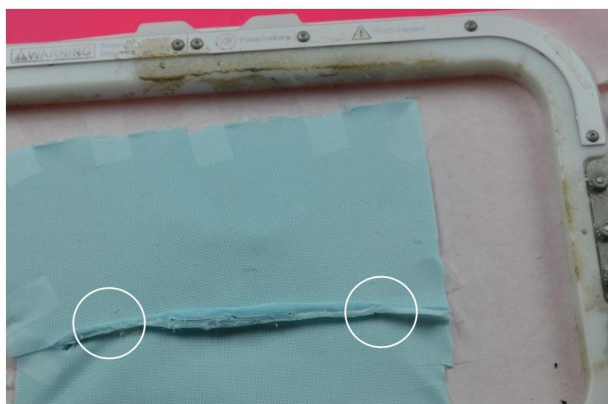
WE WANT TO EXPOSE THE LINES ON EITHER SIDE OF THE HEAD AS WE NEED THOSE TO PLACE THE BACK OF THE HEAD



MAKE SURE THE NECK IS LAYING ON THE FOX FACE. LAY THE BACK OF THE HEAD OVER THE FACE FACE RIGHT SIDE DOWN. ALIGN THE SEAM WITH THE DIE LINES ON EACH SIDE OF THE FACE. MAKE SURE THE NECK IS CENTERED ON THE FACE FOX HORIZONTALLY TOO



HERE IS THE DIE LINE MATCHING IT TO THE SEAM. WE NEED TO ALIGN THEM ON EITHER SIDE OF THE FACE



TAPE THE SEAM HERE SO YOUR MACHINE CAN GO OVER IT WITHOUT CATCHING ON THE SEAM AND TAPE THE FABRIC PANEL WELL ALL OVER. YOU MAY NEED TO TAPE THE WHOLE SEAM IF USING A SINGLE NEEDLE



STITCH THE FINAL TACK DOWN STITCH

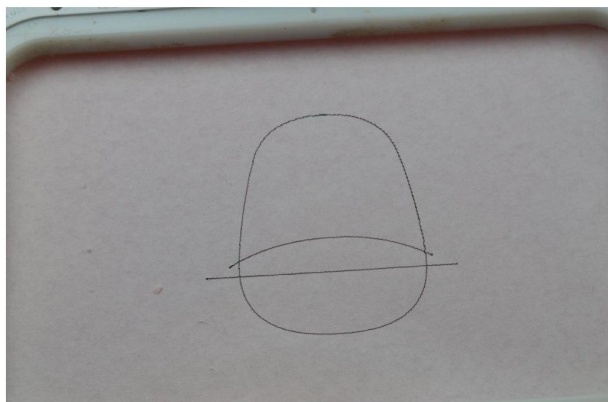




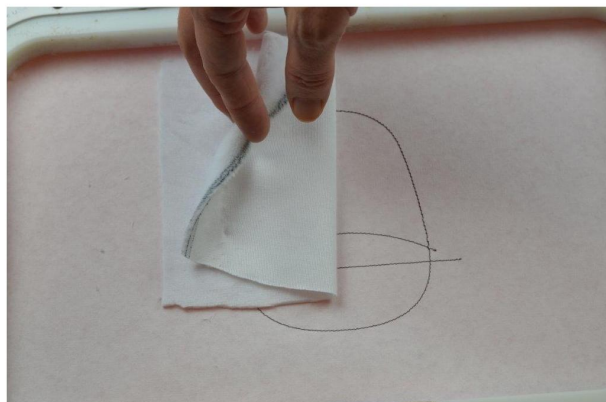
CUT OUT THE FOX HEAD CLOSE TO THE TACK DOWN AND LEAVE A 1/2 GAP FOR THE OPENING. REMOVE THE STABILIZER



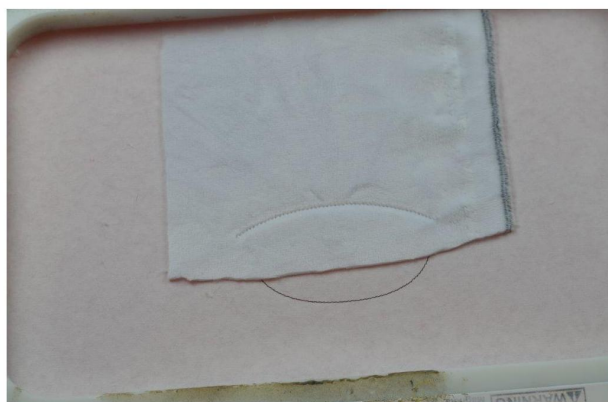
TURN THE FOX HEAD RIGHT SIDE OUT. THIS CONCLUDES THE FOX HEAD



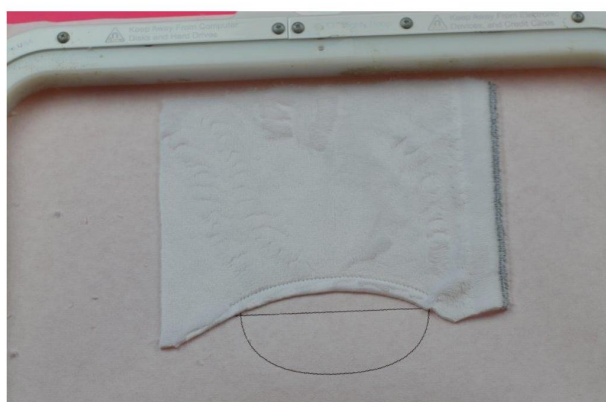
LOAD PART 4 OF THE UNICORN LOVEY TO STITCH THE HEAD OF THE UNICORN. STITCH THE DIE LINES ON A NEW PIECE OF STABILIZER



COVER THE TOP HALF OF THE UNICORN FACE WITH A PIECE OF FABRIC RIGHT SIDE UP. TAPE IN PLACE



STITCH THE TACK DOWN



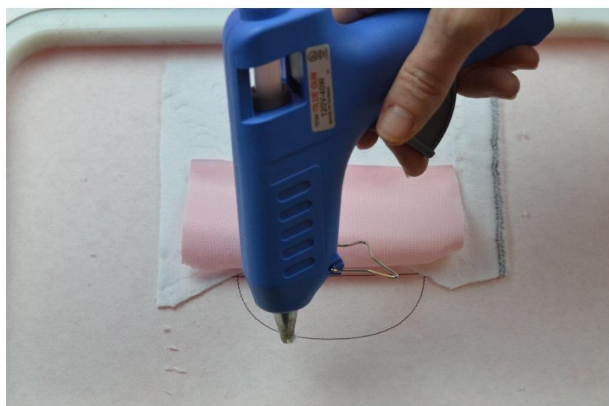
TRIM THE FABRIC NEAR THE TACK DOWN AS SHOWN BUT NOT TOO CLOSE



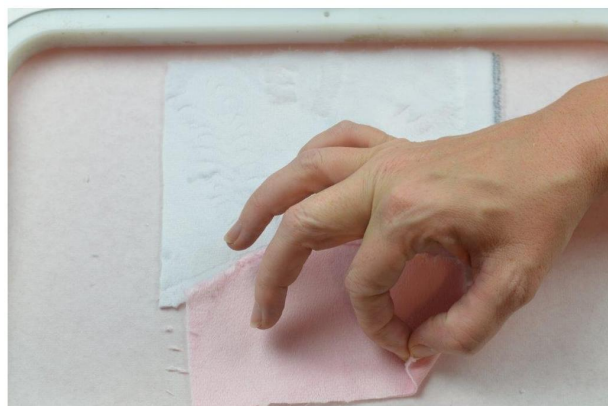
COVER THE BOTTOM HALF OF THE FACE WITH FABRIC RIGHT SIDE UP AND TAPE IN PLACE



STITCH THE TACK DOWN



I LIKE TO HOT GLUE THE FABRIC DOWN SO IT WON'T MOVE BECAUSE WE ARE ABOUT TO SATIN STITCH. YOU CAN USE SCOTCH TAPE OR HOT GLUE.



HERE I AM SHOWING THE FABRIC IS GLUED DOWN

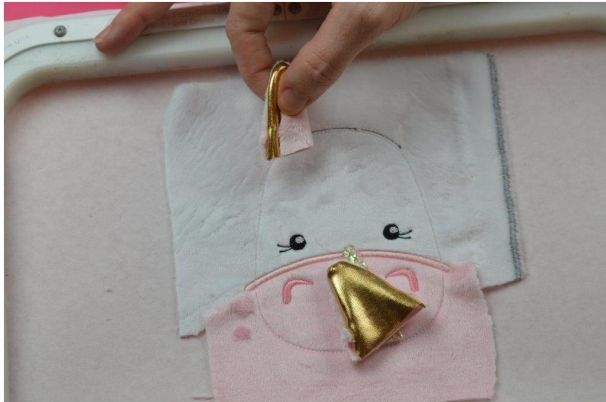


STITCH THE STAIN STITCH FOR THE FACE AND THEN THE TACK DOWN LINE ALL AROUND THE HEAD



STITCH THE NOSTRILS, THE EYELASHES, THE EYES, THE HIGHLIGHTS OF THE EYES, AND THEN FINALLY THE DIE LINE FOR THE EARS AND HORN

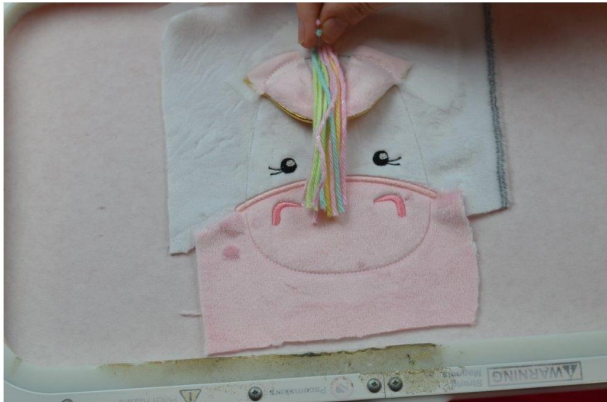




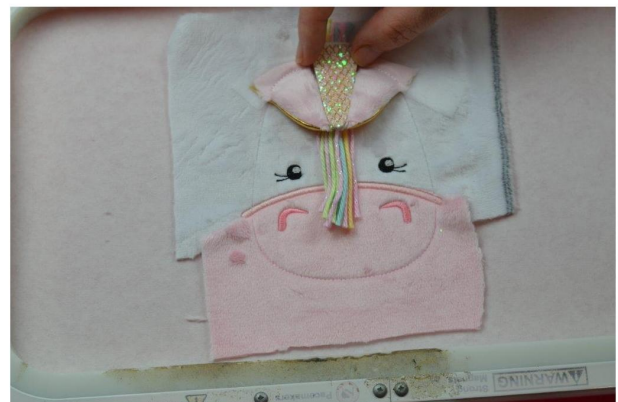
FOLD THE EARS AS SHOWN.



TAPE THEM FACE DOWN OVER THE EARS DIE LINES. AND STITCH THE TACK DOWN FOR THE EARS



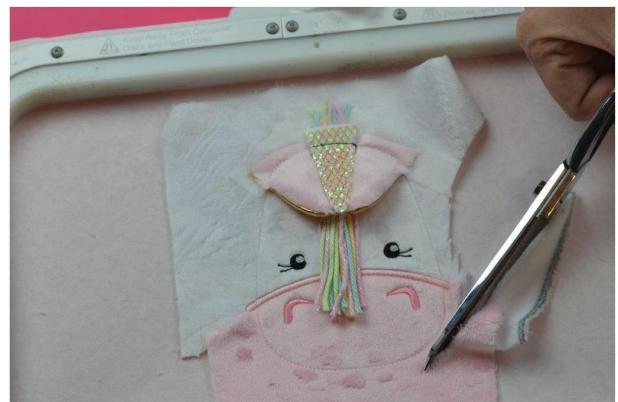
IF YOU WANT, TAPE A SMALL AMOUNT OF YARN FOR THE MANE BETWEEN THE EARS.



TAPE THE HORN OVER THE YARN AS SHOWN



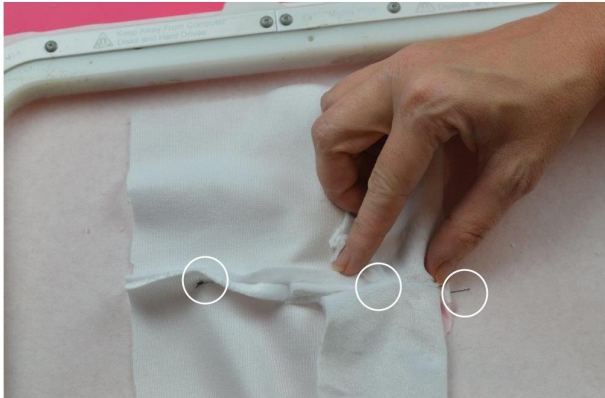
STITCH THE TACKDOWN FOR THE HORN



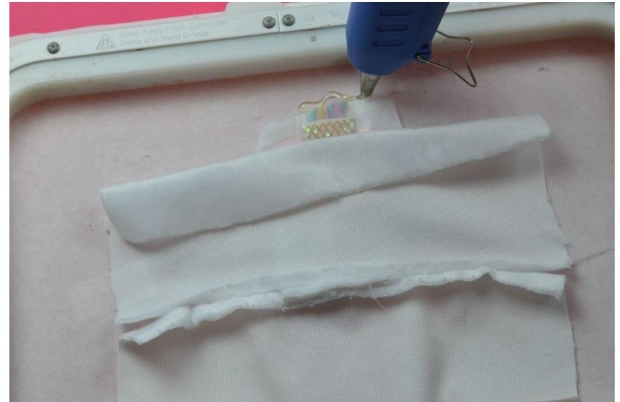
TRIM AWAY ANY EXCESS FABRIC AROUND THE FACE TO EXPOSE THAT CENTER LINE THAT GOES ACROSS THE FACE BENEATH ON THE STABILIZER



TAKE THE BACK OF THE HEAD YOU MADE EARLIER AND PLACE IT RIGHT SIDE DOWN OVER THE UNICORN FACE. MAKE SURE THE NECK IS ON THE FACE. CENTER THE NECK ON THE FACE.



ALIGN THE SEAM ALLOWANCE ON THE FABRIC WITH THE LINES ON THE STABILIZER THAT WE EXPOSED. DO THIS FOR EACH SIDE AND DOUBLE CHECK TO MAKE SURE THE NECK IS STILL CENTERED ON THE FACE



YOU CAN USE HOT GLUE OR TAPE TO SECURE THIS FABRIC PANEL TO THE UNICORN FACE. I CHOSE TO USE HOT GLUE.



HERE I USE HOT GLUE AT THE BOTTOM TOO. I MAKE SURE THE HOT GLUE WILL NOT BE IN THE NEEDLES PATH FOR THE FINAL TACK DOWN.



SMOOTH ALL THE FABRIC OUT AND TAPE THAT SEAM ALLOWANCE IF YOU ARE USING A SINGLE NEEDLE SO THE PRESSURE FOOT WONT CATCH ON IT





STITCH THE TACK DOWN FOR THE UNICORN HEAD.  
A GAP WILL BE LEFT FOR TURNING



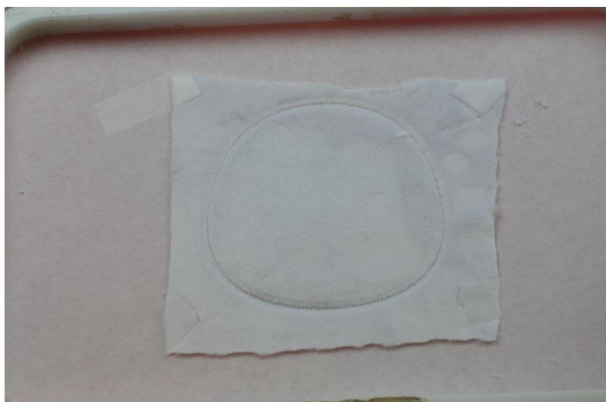
CUT OUT THE HEAD CLOSE TO THE TACK DOWN LINE  
AND LEAVE A 1/2" TAB WHERE THE GAP IS



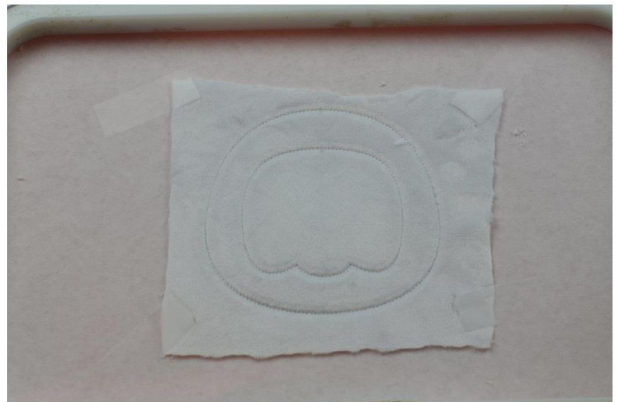
TURN THE HEAD RIGHT SIDE OUT



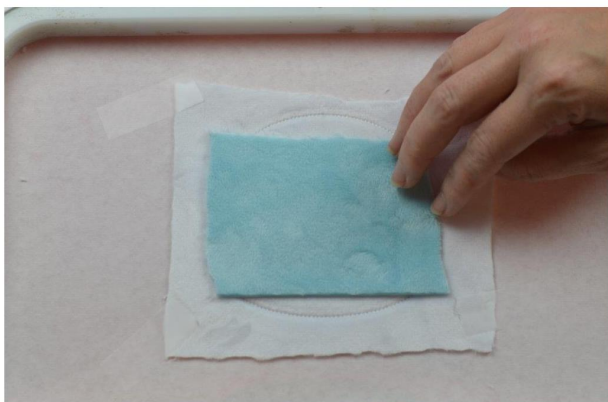
HERE IS THE BACK OF THE HEAD AND THE NECK. WE  
ARE FINISHED WITH THE UNICORN HEAD FILE.



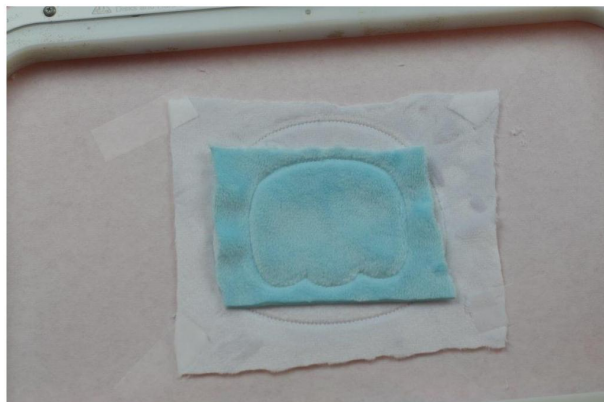
FOR THE YETI HEAD LOAD PART 3 OF THE YETI LOVEY  
AND STITCH THE DIE LINE ON A NEW PIECE OF STABILIZER  
THEN COVER WITH FABRIC RIGHT SIDE UP AND STITCH  
THE TACK DOWN FOR THE HEAD.



STITCH THE DIE LINE FOR THE FACE



COVER THE FACE WITH FABRIC RIGHTH SIDE UP AND TAPE IN PLACE



STITCH THE TACK DOWN FOR THE FACE



TRIM AROUND THE FACE CLOSE TO THE TACK DOWN



STITCH THE SATIN STITCH



STITCH THE TEETH, THE MOUTH, THE EYES, THE HIGHLIGHTS ON THE EYES AND THE HORN DIE LINES



LIGHTLY STUFF THE HORNS IF DESIRED AND PLACE THEN OVER THE HORN DIE LINES AS SHOWN

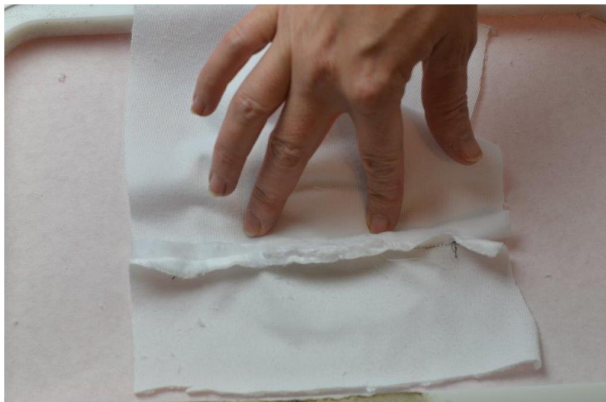




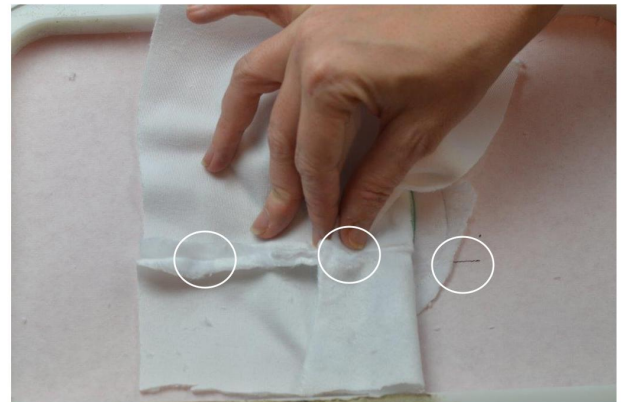
STITCH THE TACK DOWN FOR THE HORNS



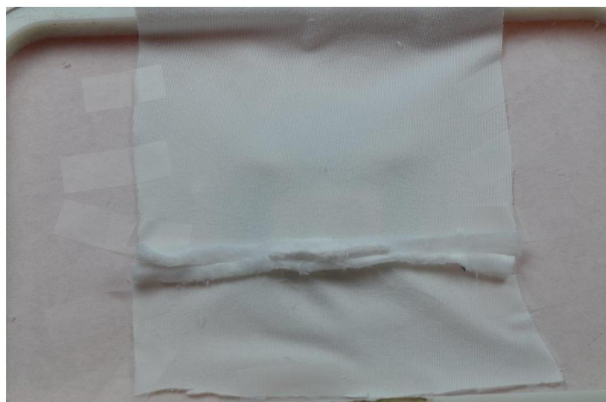
TRIM AWAY THE EXCESS FABRIC FROM THE FACE TO EXPOSE THE HORIZONTAL DIE LINES ON EACH SIDE OF HEAD



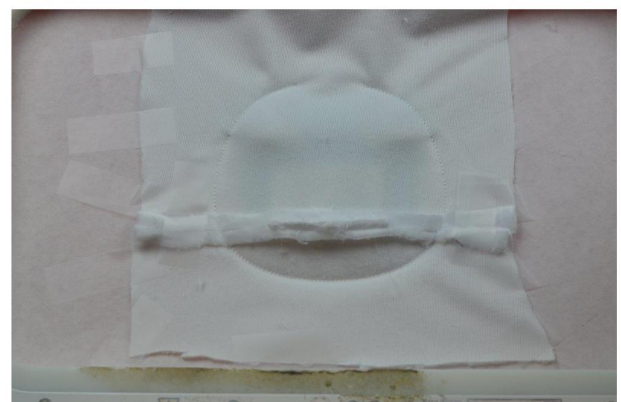
PLACE THE BACK OF THE HEAD PANEL WITH THE NECK LAYING ON THE FACE RIGHT SIDE DOWN. MAKE SURE THE NECK IS CENTERED HORIZONTALLY ON THE FACE



LINE UP THE SEAM ALLOWANCE WITH THE MARKS ON EITHER SIDE OF THE HEAD AND TAPE OR HOT GLUE THE FABRIC IN PLACE.



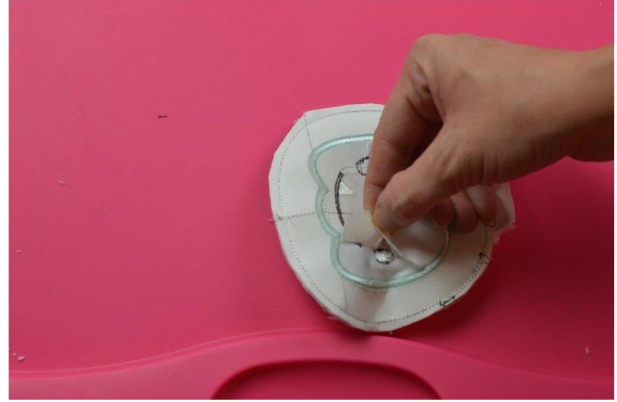
HERE, ITS ALL TAPED DOWN WELL. ALSO TAPE THE WHOLE SEAM SO YOUR PRESSURE FOOT DOESNT CATCH ON IT



STITCH THE FINAL TACK DOWN FOR THE HEAD. THERE WILL BE A GAP.



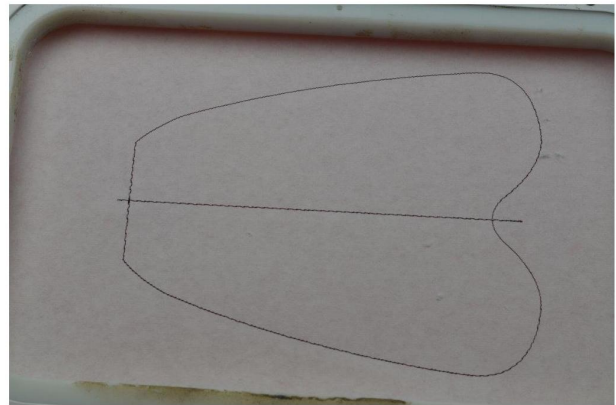
CUT OUT THE HEAD CLOSE TO THE TACK DOWN LINE AND LEAVE A 1/2" GAP FOR THE OPENING. ON THE YETI AND FOX THIS IS ON TOP OF THE HEAD AND THE UNICORN THE CHIN



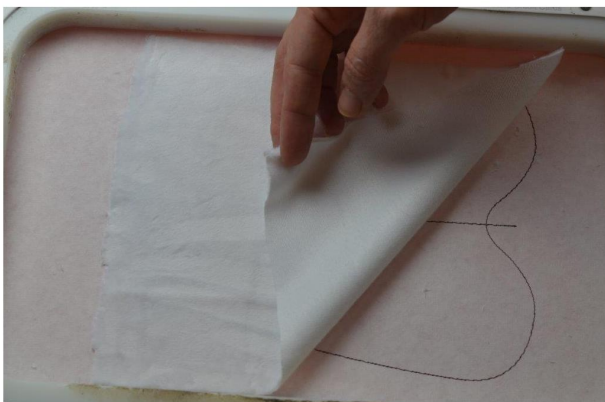
REMOVE THE STABILIZER



TURN THE HEAD RIGHT SIDE OUT THROUGH THE OPENING



LOAD THE BODY FILE. THERE ARE TWO TYPES. ONE TO ATTACH THE HEAD IN THE HOOP AND ONE WHICH WILL LEAVE AN OPENING AT THE NECK TO ATTACH THE HEAD ON THE SEWING MACHINE.

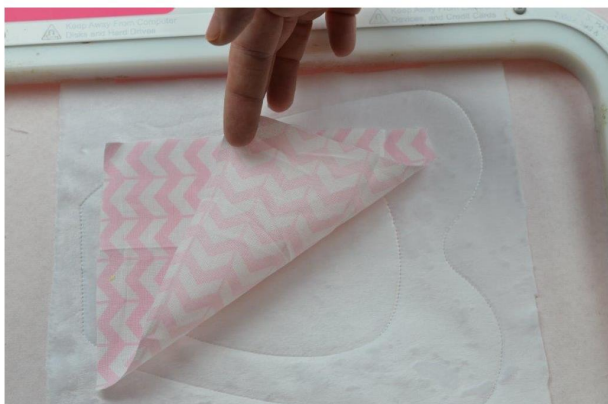


LOAD PART 5 FOR YETI AND UNICORN OR PART 6 FOR FOX AND STITCH THE DIE LINES ON A PIECE OF STABILIZER. COVER WITH FABRIC RIGHT SIDE UP



STITCH THE TACK DOWN TO SECURE





FOR THE UNICORN STITCH THE BELLY DIE LINE AND COVER WITH FABRIC RIGHT SIDE UP



STITCH THE TACK DOWN FOR THE UNICORN BELLY



TRIM THE FABRIC CLOSE TO THE TACK DOWN



STITCH THE SATIN STITCH. AT THIS POINT IF YOU WANT TO PLACE A NAME, ITS AFTER THIS STEP YOU WOULD INSERT IT.



ON THE FOX, YOU WOULD STITCH THE CHEST DIE LINE



COVER WITH FABRIC RIGHT SIDE UP AND STITCH THE TACK DOWN FOR THE CHEST



TRIM THE FABRIC CLOSE TO THE TACK DOWN LINE



STITCH THE SATIN STITCH. AT THIS POINT IF YOU WANT TO ADD A NAME, AFTER THIS STEP IS WHERE YOU WOULD INSERT IT



THE YETI HAS NOTHING ON HIS TUMMY. AFTER THE TUMMY ON THE FOX AND UNICORN, STITCH THE DIE LINES FOR THE ARMS AND NECK. ON THE YETI THE FEET DIE LINES ALSO STITCH.



IF STITCHING THE YETI, LIGHTLY STUFF THE FEET IF YOU WANT TO.



TRIM ABOUT 1/4" ALL THE WAY AROUND THE BODY ON THE UNICORN, THE FOX AND THE YETI. THIS MAKES ATTACHING ARMS AND HEAD ETC EASIER



ON THE YETI TO ATTACH THE FEET, I USE A HOT GLUE GUN TO APPLY A BEAD OF GLUE WHERE THE FEET WILL GO. THE FOX AND UNICORN DONT HAVE FEET SO SKIP THIS IF STITCHING THOSE





PLACE THE FEET OVER THE HOT GLUE AT THE DIE LINES FOR THE FEET ON THE YETI. TAPE THE REST OF THE FEET DOWN WELL. YOU DONT HAVE TO STUFF THE FEET OR USE HOT GLUE YOU CAN ALSO JUST USE TAPE TO SECURE THEM



STITCH THE TACK DOWN TO SECURE THE FEET



FOR ALL THREE LOVEYS YOU WILL ATTACH THE ARMS LIKE THIS. YOU CAN LIGHTLY..AND I MEAN LIGHTLY STUFF THE ARMS. BARELY. AND TAPE THEM IN PLACE



STITCH THE TACK DOWN LINE TO SECURE THE ARMS



IF STITCHING THE VERSION WHERE YOU ATTACH THE HEAD IN THE HOOP, LAY THE HEAD FACE DOWN SO THE NECK FABRIC IS OVER THE NECK DIE LINE



I HOT GLUE THE LOOSE NECK FABRIC RIGHT AT THE NECK DIE LINE. I WANT TO GET IT AS CLOSE TO THE HEAD AS I CAN AND HOT GLUE HOLD MUCH BETTER THAN TAPE. MAKE SURE THAT YOU DONT GLUE TOO CLOSE TO THE DIE LINE SO THE NEEDLE WONT GO THROUGH THE GLUE

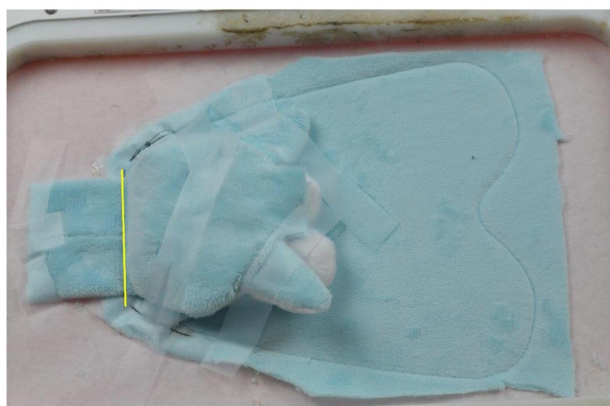
Copyright Planet Applique Inc. All Rights Reserved.



I LAY THE NECK FABRIC INTO THE GLUE AND HOLD IT TO SET THE GLUE. THEN I ALSO TAPE THE REST OF THE NECK FABRIC TO THE STABILIZER AS SHOWN



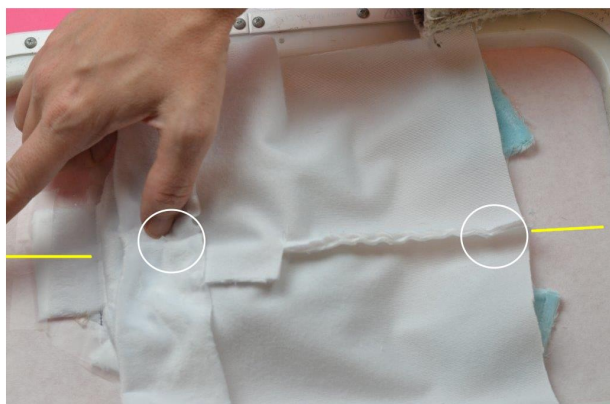
I ALSO TAPE THE HEAD DOWN WITH LONG PIECES OF TAPE BECAUSE OF THE BULK. TAKE A MOMENT TO MAKE SURE THE CHIN ISNT IN THE WAY OF THE NECK DIE LINE



NOW STITCH THE TACK DOWN FOR THE HEAD. HERE YOU CAN SEE I GOT MY HEAD AS CLOSE AS I COULD.



TAKE THE BACK OF YOUR BODY YOU MADE EARLIER. FLIP IT OVER AND PLACE IT RIGHT SIDE DOWN OVER THE BODY



CENTER THE BACK OF THE BODY OVER THE FRONT OF THE BODY. USE THE CENTER LINES ON THE HOOP AND THE CENTER DIE LINE THAT STITCHED IN THE FIRST STEP



HERE I START WITH LINING UP THE BOTTOM AND I WILL USE DABS OF HOT GLUE AS I WORK ON THE BOTTOM HALF GETTING IT CENTERED





HERE I AM APPLYING HOT GLUE. I AM CAREFUL THAT I AM NOT TOO CLOSE TO THE BODY OUTLINE. MAKE SURE THE TAIL OF THE FOX OR UNICORN IS NOT GOING TO BE IN THE WAY OF THE FINAL TACK DOWN.



AS YOU CAN SEE HERE. THE USE OF HOT GLUE HELPS ME TO REALLY GET IT NICE FLAT AND SMOOTH. GLUE ALLOWS YOU TO PULL IT FLAT. TAPE CANT DO THAT.



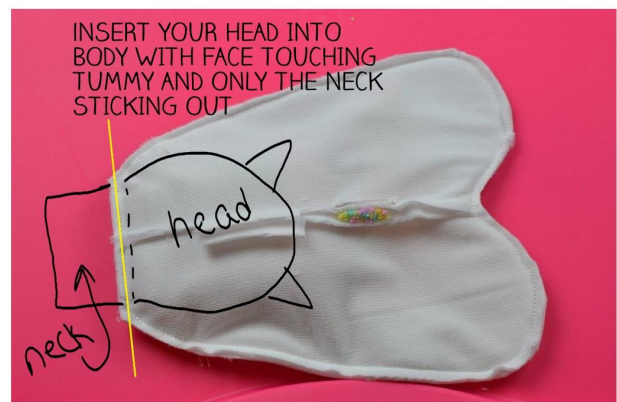
STITCH THE FINAL TACK DOWN. FOR ATTACHING THE HEAD IN THE HOOP, IT WILL SEW ALL THE WAY AROUND. BUT IF USING PART B THEN THE NECK WILL BE LEFT OPEN



CUT OUT THE BODY CLOSE TO THE TACK DOWN LINE. IF USING PART B OF THE BODY, THEN LEAVE A 1/2" TAB AT THE OPEN NECK FOR YOUR SEAM ALLOWANCE



IF ATTACHING THE HEAD ON A SEWING MACHINE TURN THE HEAD OVER AND LOCATE THE NECK FABRIC WE WANT TO PUT IT INSIDE THE BODY THROUGH THE NECK OPENING ON THE BODY



LOOKING AT THE BACK OF THE BODY, SLIDE THE HEAD FACE DOWN INTO THE BODY. LET ONLY THE NECK FABRIC STICK OUT LIKE A LONG TAB. PULL THE NECK SO YOU ARE GOING TO STITCH AS CLOSE TO THE HEAD AS POSSIBLE. PIN IT. SEW ALL THE WAY ACROSS THE YELLOW LINE THROUGH ALL THE LAYERS.

Copyright Planet Applique Inc. All Rights Reserved.



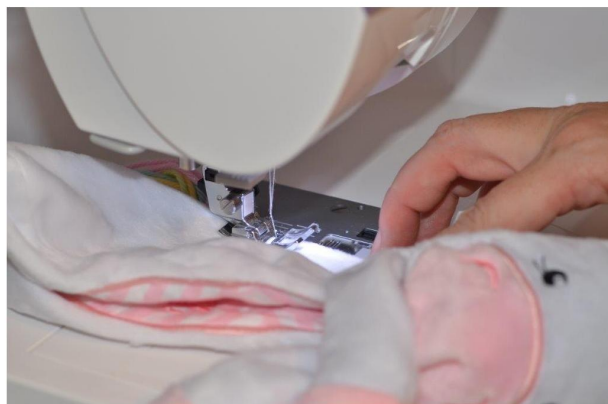
REMOVE THE STABILIZER



TURN THE LOVEY RIGHT RIGHT OUT THROUGH THE SMALL GAP OPENING IN THE BACK OF THE LOVEY



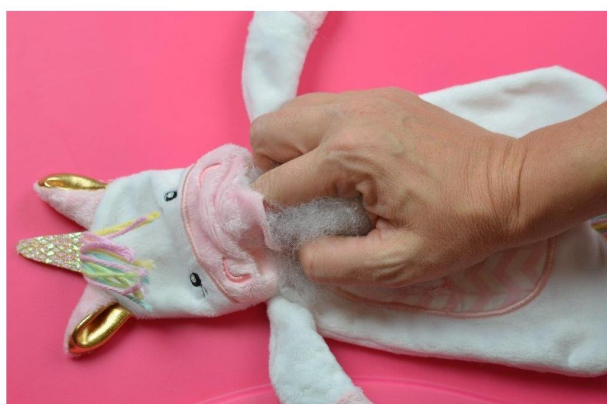
A LOVEY IS NOT STUFFED SO FIND THE OPENING IN THE BACK AND FOLD THE TABS INTO THE BODY AS SHOWN



TOP STITCH THE GAP CLOSE TO THE OPENING ON A SEWING MACHINE OR HAND STITCH IT CLOSE WITH A LADDER STITCH IF YOU WANT.



HERE I JUST TOP STITCHED AS CLOSE TO THE EDGE AS I COULD GET



NOW LETS STUFF THE HEAD. ON THE UNICORN, THIS IS AT THE CHIN. ON THE YETI AND FOX THIS IS AT THE TOP OF THE HEAD





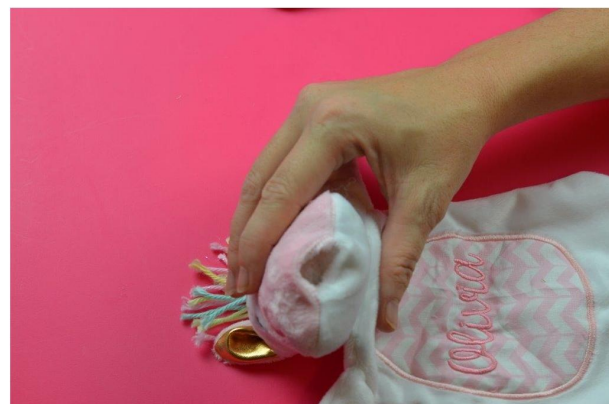
INSERT A SOUND MAKER IN TO THE HEAD IF YOU WANT. THERE ARE DIFFERENT KINDS. THIS IS ONE KIND. I BOUGHT MINE ON ETSY, BUT THEY ARE ON AMAZON IN BULK



HERE IS ANOTHER TYPE WHICH SOUNDS LIKE A JINGLE BELL. ITS VERY SMALL AND WILL BE NESTLED INTO THE STUFFING IN THE HEAD. IT SOUNDS VERY CUTE



INSERT THE RATTLE OR JINGLE BELL INTO THE HEAD. THIS IS OPTIONAL



TUCK THE TABS INTO THE HEAD AT THE OPENING AND HAND STITCH IT CLOSE. USE A LADDER OR YOUR FAVORITE STITCH. I HAVE A VIDEO ON OUR YOUTUBE CHANNEL ON HOW TO DO A PROPER LADDER STITCH



HERE IS THE OPENING ON THE YETI



THIS HAS BEEN A LONG TUTORIAL DUE TO COVERING THREE STYLES OF THE SAME DESIGN. HERE ARE OUR COMPLETED LOVEYS! THESE MAKE EXCELLENT FIRST TOYS FOR BABIES AND CAN BE CUSTOMIZED WITH THEIR NAME TO MAKE THEM EXTRA SPECIAL